



**GRAYS HARBOR
COLLEGE**

CARPENTRY AS A CAREER

Program Instructor/Advisor: Adam Pratt, (360) 538-4130



<http://www.ghc.edu/voc/carpentry.pdf>

CARPENTRY AS A CAREER

Grays Harbor College has worked with the industry to develop these leading-edge programs to reflect current state requirements in the carpentry/woodworking field. These programs provide the knowledge and understanding of the field in areas such as:

- Finish Carpentry
- Laminating
- Material estimating
- Tool usage and safety
- Scaffold erection
- Building codes
- Blueprint reading
- Building layout
- Basic surveying
- Concrete formwork
- Framing
- Roofing techniques
- Exterior wall siding
- Sheetrock
- Construction of decks, porches, and stairs

Work Experience

Students have a unique opportunity to complete the degree program on an actual job site. The class will participate in the construction of an accepted residential home project from the ground to the finish.

Employment Opportunities

Some of the typical employment opportunities for graduates of this program include:

- Union carpenter apprentice
- Carpenter's helper
- General carpenter
- Form carpenter
- Framing carpenter
- Siding installer
- Finish carpenter
- Independent contractor
- Construction laborer

Salary Expectations

For job opportunities and salary expectations, please see: <http://www.workforceexplorer.com/>

Funding Opportunity

Students who are interested in completing the Carpentry program may qualify for an additional funding option. Please see: <http://ghc.edu/Opportunity> for details.

When Can I Enroll?

Students may enter the Carpentry programs in any quarter, including: Fall, Winter or Spring.

What Do I Need To Do First?

- **Apply for Admission** (<https://admissions.ctc.edu/applicant/welcome.cfm>)
- **Request Official Transcripts** from high school, previous colleges or GED certificate. Have them sent directly to GHC.
- **Take the College Placement Test (CPT).** Make an appointment at GHC Counseling Center (360-538-4099 or toll-free 1-800-562-4830). The CPT is not required if 100 level English and math were completed at another college.
- **Meet with an entry advisor.**



CARPENTRY TECHNOLOGY

Associate in Technology Degree

Prerequisite Requirements

Instructor permission is required prior to enrollment in CARP 121.

Core Courses

		<u>Credits</u>
CARP 121	Residential/Commercial Carpentry I	16
CARP 122	Residential/Commercial Carpentry II	16
CARP 123	Residential/Commercial Carpentry III	16
CARP 221	Residential/Commercial Carpentry IV	16
CARP 222	Residential/Commercial Carpentry V	16
CARP 223	Residential/Commercial Carpentry VI	16
<i>Credits Required</i>		<i>96</i>

Support Courses

WELD 101	Related Welding I (or higher)	6
<i>Credits Required</i>		<i>6</i>

General Education Courses

ENGL& 101	English Composition I	5
or		
ENGL 150	Vocational/Technical/Business Writing	
MATH 100	Vocational/Technical Math (or higher)	5
PSYC& 100	General Psychology	3-5
or		
PSYCH 106	Applied Psychology	
or		
SOC& 101	Introduction to Sociology	
<i>Credits Required</i>		<i>13-15</i>

Minimum Credits Required

115+
3 PE credits

Grays Harbor College complies with all Federal and State rules and regulations and does not discriminate on the basis of race, color, creed, religion, national origin, sex, sexual orientation, age, marital status, disability, or status as a disabled or Vietnam era veteran.



CARPENTRY TECHNOLOGY Certificate of Completion

Prerequisite Requirements

Instructor permission is required prior to enrollment in CARP 121.

<u>Core Courses</u>		<u>Credits</u>
CARP 121	Residential/Commercial Carpentry I	16
CARP 122	Residential/Commercial Carpentry II	16
CARP 123	Residential/Commercial Carpentry III	16
<i>Credits Required</i>		<i>48</i>
<u>General Education Courses</u>		
ENGL& 101	English Composition I	5
or		
ENGL 150	Vocational/Technical/Business Writing	
MATH 100	Vocational/Technical Math (or higher)	5
PSYC& 100	General Psychology	3-5
or		
PSYCH 106	Applied Psychology	
or		
SOC& 101	Introduction to Sociology	
<i>Credits Required</i>		<i>13-15</i>
<i>Minimum Credits Required</i>		<i>61</i>

Grays Harbor College complies with all Federal and State rules and regulations and does not discriminate on the basis of race, color, creed, religion, national origin, sex, sexual orientation, age, marital status, disability, or status as a disabled or Vietnam era veteran.



BEGINNING CARPENTRY

Certificate of Achievement

Prerequisite Requirements

Instructor permission is required prior to enrollment in CARP 121.

<u>Core Courses</u>		<u>Credits</u>
CARP 121	Residential/Commercial Carpentry I	16
CARP 122	Residential/Commercial Carpentry II	16
CARP 123	Residential/Commercial Carpentry III	16
<i>Minimum Credits Required</i>		48

ADVANCED CARPENTRY

Certificate of Achievement

Prerequisite Requirements

Instructor permission is required prior to enrollment in CARP 221.

<u>Core Courses</u>		<u>Credits</u>
CARP 221	Residential/Commercial Carpentry IV	16
CARP 222	Residential/Commercial Carpentry V	16
CARP 223	Residential/Commercial Carpentry VI	16
<i>Minimum Credits Required</i>		48

Grays Harbor College complies with all Federal and State rules and regulations and does not discriminate on the basis of race, color, creed, religion, national origin, sex, sexual orientation, age, marital status, disability, or status as a disabled or Vietnam era veteran.

CARPENTRY TECHNOLOGY PROGRAM COURSE DESCRIPTIONS

BUS& 101 (formerly BA 101) 5 Credits **Introduction to Business**

Prerequisites: Math 060 and READ 080 or instructor permission.

Introduction to Business is a general course designed to provide an understanding of how the American business system operates and its place in the economy. The course provides background for more effective and better use of business services in personal affairs as well as foundation for future courses in various business programs. 5 lecture hours. Satisfies specified elective requirement for the AA degree.

CARP 121 16 Credits **Residential and Commercial Carpentry I**

Prerequisites: Placement in MATH 060 and ENGL 060; and instructor permission.

A lecture-lab course to provide an introduction to safe work practices, work ethics, basic tool use, and carpentry concepts. Students may participate in the construction of a home on a working jobsite. 8 lecture hours; 16 lab hours. Vocational program course. May be used as a general elective in the AA degree.

CARP 122 16 Credits **Residential and Commercial Carpentry II**

Prerequisite: Completion of CARP121 with a passing grade and instructor permission.

A lecture-lab course to build upon the skills learned in CARP 121. Training increases skills and expands tasks learned in CARP 121. Students may participate in the construction of a home on a working jobsite. 8 lecture hours; 16 lab hours. Vocational program course. May be used as a general elective in the AA degree.

CARP 123 16 Credits **Residential and Commercial Carpentry III**

Prerequisite: Completion of CARP 122 with a passing grade and instructor permission.

A lecture-lab course to build upon the skills learned in CARP 122. Training increases skills and expands tasks learned in CARP 122. Students may participate in the construction of a home on a working jobsite. Tasks are completed to industry standards. 8 lecture hours; 16 lab hours. Vocational program course. May be used as a general elective in the AA degree.

CARP 221 16 Credits **Residential and Commercial Carpentry IV**

Prerequisite: Completion of CARP 123 with a passing grade and instructor permission.

A lecture-lab course to build upon the skills learned in CARP 121-123. Training increases skills and expands tasks learned in CARP 121-123. Students may participate in the construction of a home on a working jobsite. Tasks are completed to industry standards and increase in complexity. 8 lecture hours; 16 lab hours. Vocational program course. May be used as a general elective in the AA degree.

CARP 222 16 Credits **Residential and Commercial Carpentry IV**

Prerequisite: Completion of CARP 221 with a passing grade and instructor permission.

A lecture-lab course to build upon the skills learned in CARP 121-221. Training increases skills and expands tasks learned in CARP 121-221. Students may participate in the construction of a home on a working jobsite. Tasks are completed to industry standards and increase in complexity. Problem solving is emphasized. Leadership opportunities are presented. 8 lecture hours; 16 lab hours. Vocational program course. May be used as a general elective in the AA degree.

CARP 223 16 Credits **Residential and Commercial Carpentry VI**

Prerequisite: Completion of CARP 222 with a passing grade and instructor permission.

A lecture-lab course to build upon the carpentry skills learned in CARP 121-222. Training increases skills and expands tasks learned in CARP 121-222. Students may participate in the construction of a home on a working jobsite. Tasks are completed to industry standards and increase in complexity. Problem solving is emphasized. Leadership opportunities are presented. Course includes a capstone exam to ensure retention of competency in previous Carpentry Technology program topics. 8 lecture hours; 16 lab hours. Vocational program course. May be used as a general elective in the AA degree.

CIS 102 3 Credits **Microcomputer Applications**

Recommended Preparation: CIS 100 and CIS 101 or concurrent enrollment.

Prerequisite: READ 080.

This course introduces computer systems with emphasis on applications. Students will work with various applications including electronic spreadsheets, word processing and presentation software. 2 lecture hours; 2 lab hours. Satisfies specified elective requirement for the AA degree.

ENGL& 101 5 Credits **English Composition I**

Prerequisite: Appropriate English placement test score or a grade of "C-" or better in ENGL 095.

ENGL& 101 emphasizes the basic rhetorical principles and development of expository and argumentative prose. Included is an introduction to the research methods necessary for evidence-backed writing. Skills gained in this course should help students improve their performance of such tasks as writing for a variety of purposes and audiences, as well as writing informative and persuasive essays and research-backed reports, projects and papers. 5 lecture hours. Satisfies writing skills requirement for the AA degree.

CARPENTRY TECHNOLOGY PROGRAM COURSE DESCRIPTIONS

ENGL 150

5 Credits

Vocational/Technical and Business Writing

Recommended Preparation: Competence in basic computer operation or concurrent enrollment in CIS 100.

Prerequisite: Appropriate English placement score or a grade of "C-" or better in ENGL 095.

This course is designed for both vocational/technical and business students. It emphasizes written and oral communication required in the world of work. Major topics include business letters and memorandums, formal and informal reports, computer graphics, basic principles of technical writing, and oral presentations. 5 lecture hours. Vocational program course. May be used as a general elective in the AA degree.



MATH 100

5 Credits

Vocational Technical Mathematics

Prerequisites: A grade of "C-" or better in MATH 059 or MATH 060 or appropriate placement score.

This course is designed to meet the needs of the vocational-technical student. Topics will include powers and roots, signed numbers, formulae manipulation, plane and solid geometry, trigonometry and specialized formulae. 5 lecture hours.

Vocational program course. May be used as a general elective in the AA degree.

PSYC& 100

5 Credits

General Psychology

Recommended Preparation: Placement in ENGL& 101.

An introduction to psychology utilizing lectures and group exercises. Deals with the psychology of behavior, development, learning, cognition, motivation and emotion, perception, memory, and both normal and abnormal personalities. Provides an overview of modern psychology in terms of biological, social and intrapsychic factors. 5 lecture hours. Satisfies social science distribution area D requirement or specified elective for the AA degree.

PSYCH 106

3 Credits

Applied Psychology

Applications of theory and current research in psychology with major topics of personality, decision making, communications, motivation, learning and the workplace. Focuses on individual and group thought and behavior in the world of work. Emphasis is placed on change, personal and professional growth. 3 lecture hours. May be used as a general elective in the AA degree.

SOC& 101 (formerly SOC 110)

5 Credits

Introduction to Sociology

Recommended Preparation: ENGL 095 or placement in ENGL& 101.

An introduction to the principles, concepts, theories and methods of the sociological perspective. Emphasis is placed upon relating sociological ideas to national, community, and individual levels. 5 lecture hours. Satisfies social science distribution area C requirement or specified elective for the AA degree.

WELD 101

6 Credits

Related Welding I

Students are given an overview of welding employment opportunities, the most common welding processes (SMAW, GMAW, FCAW and GTAW), and oxyacetylene cutting and heating. 3 lecture hours; 6 lab hours. Vocational program course. May be used as a general elective in the AA degree.

GRAYS HARBOR COLLEGE - Typical Student Schedule
CARPENTRY TECHNOLOGY - ASSOCIATE IN TECHNOLOGY DEGREE

1st Quarter

Course #	Course Title	Credits
CARP 121	Residential/Commercial Carpentry I	16
TOTAL QUARTER CREDITS		16

2nd Quarter

Course #	Course Title	Credits
CARP 122	Residential/Commercial Carpentry II	16
TOTAL QUARTER CREDITS		16

3rd Quarter

Course #	Course Title	Credits
MATH 100	Vocational/Technical Math (or higher)	5
CARP 123	Residential/Commercial Carpentry III	16
TOTAL QUARTER CREDITS		21

4th Quarter

Course #	Course Title	Credits
CARP 221	Residential/Commercial Carpentry IV	16
PSYCH 106	Applied Psychology	3
TOTAL QUARTER CREDITS		19

5th Quarter

Course #	Course Title	Credits
CARP 222	Residential/Commercial Carpentry V	16
WELD 101	Related Welding I	6
TOTAL QUARTER CREDITS		22

6th Quarter

Course #	Course Title	Credits
CARP 223	Residential/Commercial Carpentry V	16
ENGL 150	Vocational/Technical/Business Writing	5
TOTAL QUARTER CREDITS		21

PLEASE NOTE: Students may substitute ENGL& 101 for ENGL 150; PSYC& 100 or SOC& 101 for PSYCH 106.

GRAYS HARBOR COLLEGE - Typical Student Schedule
CARPENTRY TECHNOLOGY - CERTIFICATE OF COMPLETION

1st Quarter

Course #	Course Title	Credits
CARP 121	Residential/Commercial Carpentry I	16
ENGL 150	Vocational/Technical/Business Writing	5
TOTAL QUARTER CREDITS		21

2nd Quarter

Course #	Course Title	Credits
CARP 122	Residential/Commercial Carpentry II	16
PSYCH 106	Applied Psychology	3
TOTAL QUARTER CREDITS		19

3rd Quarter

Course #	Course Title	Credits
CARP 123	Residential/Commercial Carpentry III	16
MATH 100	Vocational/Technical Math (or higher)	5
TOTAL QUARTER CREDITS		21

PLEASE NOTE: Students may substitute ENGL& 101 for ENGL 150; PSYC& 100 or SOC& 101 for PSYCH 106.

GRAYS HARBOR COLLEGE - Typical Student Schedule
BEGINNING CARPENTRY - CERTIFICATE OF ACHIEVEMENT

1st Quarter

Course #	Course Title	Credits
CARP 121	Residential/Commercial Carpentry I	16

2nd Quarter

Course #	Course Title	Credits
CARP 122	Residential/Commercial Carpentry II	16

3rd Quarter

Course #	Course Title	Credits
CARP 123	Residential/Commercial Carpentry III	16

GRAYS HARBOR COLLEGE - Typical Student Schedule
ADVANCED CARPENTRY - CERTIFICATE OF ACHIEVEMENT

1st Quarter

Course #	Course Title	Credits
CARP 221	Residential/Commercial Carpentry IV	16

2nd Quarter

Course #	Course Title	Credits
CARP 222	Residential/Commercial Carpentry V	16

3rd Quarter

Course #	Course Title	Credits
CARP 223	Residential/Commercial Carpentry VI	16

GRAYS HARBOR COLLEGE CARPENTRY TOOL LIST

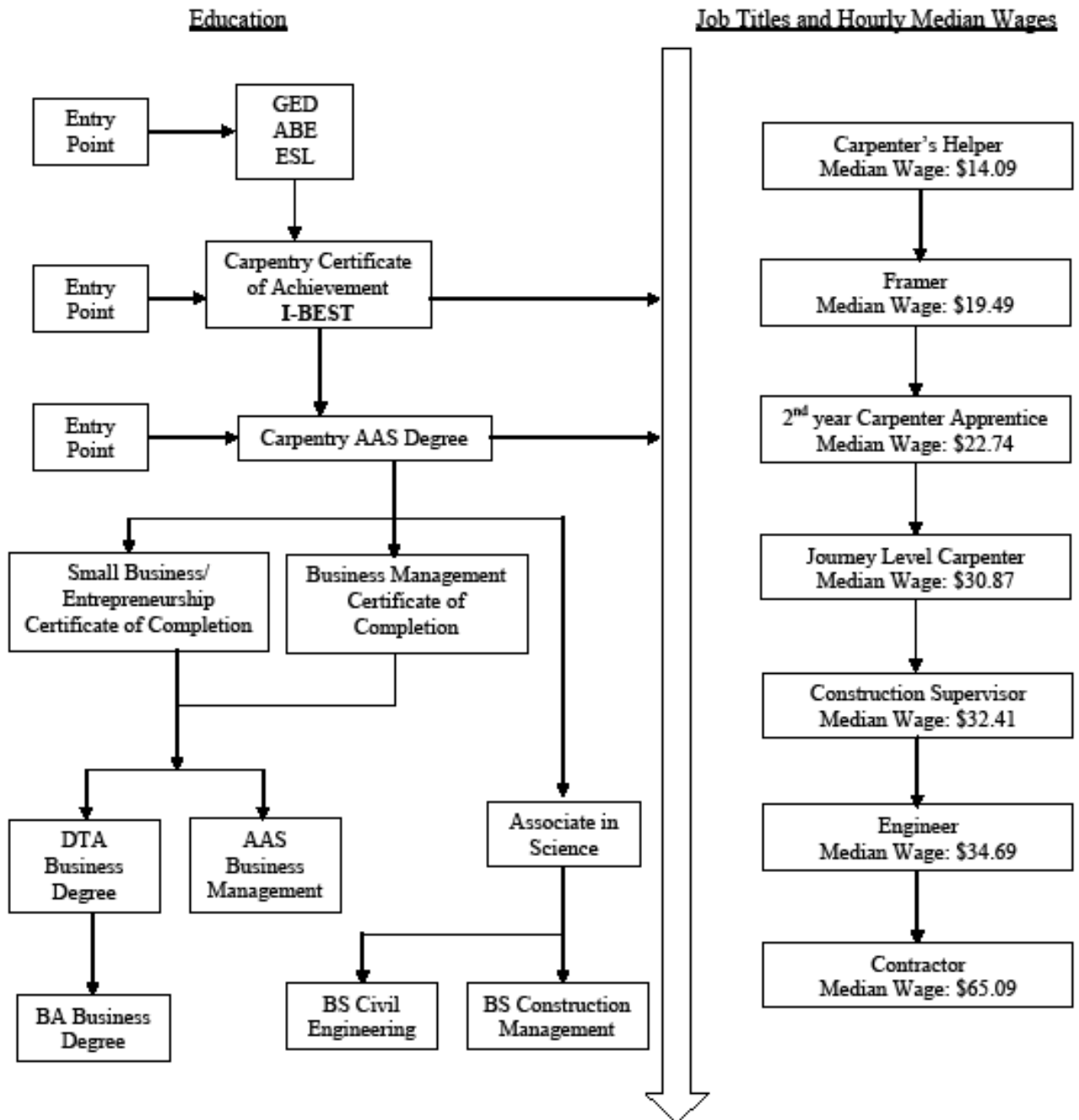
(Used tools are fine if they are of good quality and in good working order)

- | | |
|---|--|
| 1. Safety glasses | |
| 2. Work boots | |
| 3. Carpenters bibs or nail pouches | |
| 4. Rain suit | |
| 5. Tool box or bucket with liner | |
| 6. Hardhat | |
| 7. 16 oz. or 20 oz. hammer | |
| 8. 25 ft., 30 ft., or 33 ft. tape | |
| 9. 100 ft. tape | |
| 10. 12" combination square | |
| 11. Speed square | |
| 12. 16/24 framing square | |
| 13. Sliding t bevel square | |
| 14. 2 ft. or 4 ft. level | |
| 15. Plumb bob | |
| 16. Multi-bit screwdriver | |
| 17. Set of twist drill bits (1/16 to 1/4 by 32nds) | |
| 18. Set of spade bits (3/8, 1/2, 5/8, 3/4, 7/8, 1, 1-1/8, 1-1/4, 1-1/2) | |
| 19. #2 heavy duty pencils | |
| 20. Compus scribe | |
| 21. Architects rule, 3-sided (not engineers rule) | |
| 22. Construction Master IV calculator | |
| 23. Caulk box (quick cam type) | |
| 24. Dry line | |
| 25. Cats paw (2-in-1 tool, both ends) | |
| 26. Wrecking bar (2 ft.) | |
| 27. Wonder bar | |
| 28. Chisel set of six (1/4" up) | |
| 29. 10" crescent wrench | |
| 30. 8" side cutting pliers | |
| 31. 6" flush cutting end nipper pliers | |
| 32. Vice grip pliers | |
| 33. Surform plane | |
| 34. Block plane | |
| 35. Nail sets | |
| 36. 8-point hand saw | |
| 37. Coping saw | |
| 38. 4-in-1 rasp/file | |
| 39. Hand laminate cutter and laminate file | |
| 40. 4" and 8" taping knives and tray | |
| 41. Utility knife (quick change type) | |
| 42. Tin snips (aviation type) | |
| 43. Pair of 12" quick-grip clamps | |
| | <u>OPTIONAL</u> |
| | 44. 7-1/4" power saw
(worm drive skill saw) |
| | 45. 3/8 power drill
(Dewalt) |
| | 46. Sawzall
(Dewalt quick change) |
| | 47. Jigsaw (Bosch) |
| | 48. Laminate trimmer router
(Porter Cable 3-in-1 kit) |



**GRAYS HARBOR
COLLEGE**

CARPENTRY CAREER PATHWAY



Median Wage Source: Workforce Explorer and Aberdeen Carpenters & Pile Drivers Local 317