



## **CRIMINAL JUSTICE AS A CAREER**

**(with specializations in Law Enforcement, Correctional Services, or Juvenile Justice)**

**Program Instructor/Advisor: Ron Bradbury, (360) 538-4143**



<http://www.ghc.edu/voc/cjus.pdf>

# THE CRIMINAL JUSTICE PROFESSION

The Criminal Justice Program at Grays Harbor College provides the necessary training and education for students interested in a variety of occupations within the criminal justice profession. Students can choose careers in the fields of juvenile justice, adult corrections, law enforcement, probation and parole, court services, and support services. Employment opportunities within the criminal justice profession can be found at all levels of government and in the private sector. Some examples include:

- Federal Agencies
- Federal Bureau of Investigation (FBI), Secret Service, U.S. Marshals, Drug Enforcement Administration (DEA), Alcohol, Tobacco, and Firearms (ATF), National Park Service, U.S. Fish and Wildlife, U.S. Customs, U.S. Border Patrol, Federal Prison System, U.S. Probation and Parole, U.S. Forest Service, U.S. Court Security, Bureau of Indian Affairs
- State Agencies
- Washington State Patrol (WSP), State Gambling Commission, State Liquor Control, State Parks and Recreation, State Fish and Wildlife, Department of Corrections, Community Corrections (probation and parole), Child Protective Services, Juvenile Rehabilitation, Public Lands Enforcement, Airport Police
- Local Agencies
- County sheriff's departments, city police departments, county and city park police, animal enforcement officer, code enforcement officer, county and city corrections officers, juvenile probation officers, adult probation officers, juvenile detention officers, court child advocates, court security officers, tribal police, tribal security officers
- Private Services
- Transport security, building security, security patrol, personal protection, private corrections officers, private investigations, private police officers
- 
- Work conditions do vary considerably depending on the position chosen and the level of government service or area of private security. Starting salaries can range anywhere from the mid-\$20,000 to the mid-\$50,000, again depending on the position chosen and the level of service. In addition, government positions also offer job security and personal benefits. Positions available within the criminal justice profession are challenging and personally rewarding, giving practitioners a feeling of pride, accomplishment, and self-worth.
- 
- Grays Harbor College offers several options within the Criminal Justice Program, allowing students to specialize in law enforcement, correctional services, or juvenile justice. The *Associate of Science Degree (AS) in Criminal Justice* prepares students for entry into their chosen profession, and is a transferable degree to all four-year school; the *Associate of Applied Science Degree (AAS) in Criminal Justice* also prepares students for entry into their chosen profession, providing for greater study of criminal justice subjects and is transferable to the Evergreen State College; and the *Certificate of Completion in Criminal Justice* is a program that provides students with a general knowledge of criminal justice and helps prepare students for entry-level positions. For more information, contact Ron Bradbury, Criminal Justice Instructor, at (360) 538-4143.

## **Salary Expectations**

For job opportunities and salary expectations, please see: <http://www.workforceexplorer.com/>

## **What Do I Need To Do First?**

**Apply for Admission** (<https://admissions.ctc.edu/applicant/welcome.cfm>)

**Request Official Transcripts** from high school, previous colleges or GED certificate. Have them sent directly to GHC.

**Take the College Placement Test (CPT).** Make an appointment at GHC Counseling Center (360-538-4099 or toll-free 1-800-562-4830). The CPT is not required if 100 level English and math were completed at another college.

Meet with an entry advisor.



## CRIMINAL JUSTICE

### Associate in Applied Science Degree

*(With specializations in Law Enforcement, Correctional Services, or Juvenile Justice)*

*Graduates of the Basic Police Academy, Correctional Officer Academy, and Police Reserve Academy may request in lieu credit. Credit for advanced training provided by the Washington State Criminal Justice Training Commission may also be accepted. Please see the Criminal Justice advisor for additional information.*

<u><b>Core Courses</b></u>		<u><b>Credits</b></u>
CJ& 101	Introduction to Criminal Justice	5
CJUS 102	Law and Society	5
CJUS 104	The Line Officer Function: Police and Corrections	5
CJUS 110	Law and Justice	5
CJUS 201	The Art of Public and Private Investigation	5
SOC 106	Juvenile Justice	5
SOC 112	Criminology	5
<b>Credits Required</b>		<b>35</b>

<u><b>Support Courses</b></u>		
CIS 102	Microcomputer Applications	3
CJUS 151	Drugs and Our Society	5
or		
HPE 151	Drugs and Our Society	
CJUS 258	Criminal Justice Internship	1-5
PSYCH 250	Social Psychology	5
or		
PSYC& 220	Abnormal Psychology	
<b>Credits Required</b>		<b>14-18</b>

<u><b>General Education Courses</b></u>		
ENGL& 101	English Composition I	5
MATH 101	Applications of Algebra (or higher)	5
PSYC& 100	General Psychology	5
PSYCH 106	Applied Psychology	3-5
or		
PSYC& 200	Lifespan Psychology	
SOC& 101	Introduction to Sociology	5
SPCH 101	Fundamentals of Speech	5
<b>Credits Required</b>		<b>28-30</b>

#### **Elective Courses**

*Elective courses must be approved by the student's academic advisor at Grays Harbor College.*

**Credits Required**      **7-13**

**Minimum Credits Required**

**90+**  
**3 PE credits**

Grays Harbor College complies with all Federal and State rules and regulations and does not discriminate on the basis of race, color, creed, religion, national origin, sex, sexual orientation, age, marital status, disability, or status as a disabled or Vietnam era veteran.



# CRIMINAL JUSTICE

## Certificate of Completion

*(With specializations in Law Enforcement, Correctional Services, or Juvenile Justice)*

*Graduates of the Basic Police Academy, Correctional Officer Academy, and Police Reserve Academy may request in lieu credit. Credit for advanced training provided by the Washington State Criminal Justice Training Commission may also be accepted. Please see the Criminal Justice advisor for additional information.*

### Prerequisite Requirements

*MATH 095 or placement in MATH 098 is a requirement for program completion.*

### Core Courses

		<u>Credits</u>
CJ& 101	Introduction to Criminal Justice	5

*In consultation with your academic advisor, select 20 additional credits from the following core courses.*

CJUS 102	Law and Society	5
CJUS 104	The Line Officer Function: Police and Corrections	5
CJUS 110	Law and Justice	5
CJUS 201	The Art of Public and Private Investigation	5
SOC 106	Juvenile Justice	5
SOC 112	Criminology	5

***Credits Required***      **25**

### Support Courses

CJUS 151	Drugs and Our Society	5
or		
HPE 151	Drugs and Our Society	
CIS 102	Microcomputer Applications	3-5
or		
SPCH 101	Fundamentals of Speech	

***Credits Required***      **8-10**

### General Education Courses

ENGL& 101	English Composition I	5
PSYC& 100	General Psychology	3-5
or		
PSYCH 106	Applied Psychology	
SOC& 101	Introduction to Sociology	5

***Credits Required***      **13-15**

***Minimum Credits Required***      **46**

# CRIMINAL JUSTICE PROGRAM COURSE DESCRIPTIONS

<b>CIS 102</b> <b>Microcomputer Applications</b> <i>Recommended Preparation: CIS 100 and CIS 101 or concurrent enrollment.</i> <i>Prerequisite: READ 080.</i> This course introduces computer systems with emphasis on applications. Students will work with various applications including electronic spreadsheets, word processing and presentation software. 2 lecture hours; 2 lab hours. Satisfies specified elective requirement for the AA degree.	<b>3 Credits</b>	<b>CJUS 110</b> <b>Law and Justice</b> <i>Recommended Preparation: ENGL 095 or placement in ENGL&amp; 101.</i> Law and Justice will examine the basic trends in law and the social changes made within our communities. The focus will be the study and analysis of the concepts of family law, labor-relations law, welfare law, and civil rights laws as they impact each and every one of us. Same as POL S 110; students may not receive credit for both. 5 lecture hours. Satisfies specified elective requirement for the AA degree.	<b>5 Credits</b>
<b>CJ&amp; 101</b> <b>Introduction to Criminal Justice</b> <i>Recommended Preparation: ENGL 095 or placement in ENGL&amp; 101; READ 090 or placement in READ 120 or instructor permission.</i> A survey of the historical development of the criminal justice system to present-day practices. This course studies the development of the police, courts and correctional agencies in meeting the demands society has placed on them. Students will explore career opportunities at the federal, state and local levels. 5 lecture hours. Satisfies specified elective requirement for the AA degree.	<b>5 Credits</b>	<b>CJUS 151</b> <b>Drugs and Our Society</b> <i>Recommended Preparation: Placement in ENGL 095.</i> This class is designed to give students a basic understanding of all classifications of drugs. Topics to be covered include the biology of drug action, effects of drugs on the body, dependence and treatment, alternatives to drug use, and drugs and the law. Types of drugs discussed will range from prescription drugs, to alcohol, to illegal drugs, and over-the-counter drugs. Same as HPE 151; students may not receive credit for both. 5 lecture hours. Satisfies specified elective requirement for the AA degree.	<b>5 Credits</b>
<b>CJUS 102</b> <b>Law and Society</b> <i>Recommended Preparation: ENGL 095 or placement in ENGL&amp; 101; READ 090 or placement in READ 120 or instructor permission.</i> Laws affect each and every one of us, impacting both our public and private lives from birth until our death. This course has been designed to provide each student with a basic knowledge and understanding of how the law controls each person's actions, what rights the individual has under our laws, and how laws are introduced and changed. Law is a system of social thought and behavior, and provides the framework within which our disputes are resolved. Law and Society will examine the impact that constitutional law, administrative law, criminal law, civil law, and family law have on the individual. Same as POL S 102. Students may not receive credit for both. 5 lecture hours. Satisfies social science distribution area B requirement or as a specified elective in the AA degree.	<b>5 Credits</b>	<b>CJUS 201</b> <b>The Art of Public and Private Investigation</b> <i>Prerequisite: CJ&amp; 101 or instructor permission.</i> Students will gain an understanding of the need for investigative services and how they impact our present-day society. The investigative techniques used by police, correctional investigators, juvenile officers, probation and parole, state agency investigators, and private investigators will be examined. Students will become aware of sources for information and the scientific aids that are available to assist in case completion. Investigation theories will be examined and students will become familiar with the process of scientific reasoning. 5 lecture hours. Vocational program course. May be used as a general elective in the AA degree.	<b>5 Credits</b>
<b>CJUS 104</b> <b>The Line Officer Function: Police &amp; Corrections</b> <i>Recommended Preparation: ENGL 095 or placement in ENGL&amp; 101; READ 090 or placement in READ 120 or instructor permission.</i> An in-depth look at the basic duties and functions of police officers and correctional officers in cities and counties throughout the nation. Students will examine the responsibilities of the police and corrections from violator contact and arrest, through the court process. Discussions will focus on police encounters with the public, and the methods used by correctional officers in their dealing with prisoners. Emphasis will be placed on the impact that police and corrections have on our community today. 5 lecture hours. May be used as a general elective in the AA degree.	<b>5 Credits</b>	<b>CJUS 204</b> <b>Introduction to Administration and Management</b> <i>Recommended Preparation: ENGL 095 or placement in ENGL&amp; 101; READ 090 or placement in READ 120 or instructor permission.</i> This course will provide students with a basic knowledge of administrative functions within the public service. We will address concerns within the management of public programs found at all levels of government: federal, state, and local. Students will examine the work of public administrators in various aspects of organizations, from the Internal Revenue Service to the public works department in a city or county government. Students will become aware of the political and historical context within which public organizations operate, and their commitment to public service. 5 lecture hours. May be used as a specified elective in the AA degree.	<b>5 Credits</b>

# CRIMINAL JUSTICE PROGRAM COURSE DESCRIPTIONS

<p><b>CJUS 258</b>  <b>Criminal Justice Internship</b>  <i>Prerequisites: CJUS 101; CJUS 102 or instructor permission. Interns must also meet the requirement set forth by the agency selected.</i>                      On-the-job training experience within a criminal justice agency. Interns work from 55 to 250 hours with or without remuneration. Vocational program course. May be used as a general elective in the AA degree.</p>	<p><b>1-5 Credits</b></p>	<p><b>PSYC&amp; 100</b>  <b>General Psychology</b>  <i>Recommended Preparation: Placement in ENGL&amp; 101.</i>                      An introduction to psychology utilizing lectures and group exercises. Deals with the psychology of behavior, development, learning, cognition, motivation and emotion, perception, memory, and both normal and abnormal personalities. Provides an overview of modern psychology in terms of biological, social and intrapsychic factors. 5 lecture hours. Satisfies social science distribution area D requirement or specified elective for the AA degree.</p>	<p><b>5 Credits</b></p>
<p><b>ENGL&amp; 101</b>  <b>English Composition I</b>  <i>Prerequisite: Appropriate English placement test score or a grade of "C-" or better in ENGL 095.</i>                      ENGL&amp; 101 emphasizes the basic rhetorical principles and development of expository and argumentative prose. Included is an introduction to the research methods necessary for evidence-backed writing. Skills gained in this course should help students improve their performance of such tasks as writing for a variety of purposes and audiences, as well as writing informative and persuasive essays and research-backed reports, projects and papers. 5 lecture hours. Satisfies writing skills requirement for the AA degree.</p>	<p><b>5 Credits</b></p>	<p><b>PSYCH 106</b>  <b>Applied Psychology</b>                      Applications of theory and current research in psychology with major topics of personality, decision making, communications, motivation, learning and the workplace. Focuses on individual and group thought and behavior in the world of work. Emphasis is placed on change, personal and professional growth. 3 lecture hours. May be used as a general elective in the AA degree.</p>	<p><b>3 Credits</b></p>
<p><b>HPE 151</b>  <b>Drugs and Our Society</b>  <i>Recommended Preparation: Placement in ENGL 095.</i>                      This class is designed to give students a basic understanding of all classifications of drugs. Topics to be covered include the biology of drug action, effects of drugs on the body, dependence and treatment, alternatives to drug use, and drugs and the law. Types of drugs discussed will range from prescription drugs, to alcohol, to illegal drugs, and over-the-counter drugs. 5 lecture hours. Satisfies specified elective requirement for the AA degree.</p>	<p><b>5 Credits</b></p>	<p><b>PSYC&amp; 200 (formerly PSYCH 220)</b>  <b>Lifespan Psychology</b>  <i>Prerequisite: PSYC&amp; 100 or instructor permission.</i>                      This course presents a comparative look at the various human development models. Students will have an opportunity to gain knowledge of the various stages of human development. This course typically fulfills basic requirements in human development for nursing, psychology and related occupations. 5 lecture hours. Satisfies specified elective requirement for the AA degree.</p>	<p><b>5 Credits</b></p>
<p><b>MATH 101</b>  <b>Applications of Algebra for Vocational-Technical Students</b>  <i>Prerequisites: A grade of "C-" or better in MATH 094 or MATH 095 or placement in MATH 098 or higher or instructor permission.</i>                      This is a non-transferable course designed to expose vocational students to mathematical concepts in the context of applications. Topics will include linear and exponential models, trigonometry, financial mathematics, and descriptive statistics. This course satisfies the mathematics requirement for some vocational-technical programs; however, it does not satisfy the quantitative reasoning skills requirement for an AA degree and does not serve as a prerequisite to any math course. 5 lecture hours. Vocational program course. May be used as a general elective in the AA degree.</p>	<p><b>5 Credits</b></p>	<p><b>PSYCH 250</b>  <b>Social Psychology</b>  <i>Prerequisite: SOC&amp; 101 or PSYC&amp; 100.</i>                      This course is the basic, beginning course in social psychology. Included in the course is a study of human nature within sociocultural systems. Group processes, perception, self-concept, attitudes, and symbolic interaction are investigated. 5 lecture hours. Satisfies specified elective requirement for the AA degree.</p>	<p><b>5 Credits</b></p>
		<p><b>PSYC&amp; 220 (formerly PSYCH 260)</b>  <b>Abnormal Psychology</b>  <i>Recommended Preparation: ENGL&amp; 101.</i>  <i>Prerequisite: PSYC&amp; 100.</i>                      An introduction to the study of abnormal behavior utilizing lectures, group exercises and case studies. This course will cover organic and environmental etiology of abnormal behavior including various disorders related to stress, anxiety, substance abuse, sexuality and moods, as well as personality dysfunction. Also, methods of therapy including cognitive-behavioral, psychodynamic and experimental as they apply to individuals and groups will be discussed. 5 lecture hours. Satisfies specified elective requirement for the AA degree.</p>	<p><b>5 Credits</b></p>

# CRIMINAL JUSTICE PROGRAM COURSE DESCRIPTIONS

## **SOC& 101**

**5 Credits**

### **Introduction to Sociology**

*Recommended Preparation: ENGL 095 or placement in ENGL& 101.*

An introduction to the principles, concepts, theories and methods of the sociological perspective. Emphasis is placed upon relating sociological ideas to national, community, and individual levels. 5 lecture hours. Satisfies social science distribution area C requirement or specified elective for the AA degree.

## **SOC 106**

**5 Credits**

### **Juvenile Justice**

*Recommended Preparation: ENGL 095 or placement in ENGL& 101; READ 090 or placement in READ 120 or instructor permission.*

This course will examine how the juvenile justice process has evolved and expanded as society has sought to understand, control and influence change in the delinquent behavior of children and youth. SOC 106 will examine the attitudes of and crimes committed by juvenile offenders, the juvenile legal system, and the response by police, courts and juvenile corrections. 5 lecture hours. Satisfies social science distribution area C requirement or serves as a specified elective in the AA degree.

## **SOC 112 (formerly CJUS 206)**

**5 Credits**

### **Criminology**

*Recommended Preparation: ENGL 095 or placement in ENGL& 101; READ 090 or placement in READ 120 or instructor permission.*

An in-depth look at the causes of crime and the people who are committing them. Crime trends will be examined and students will become familiar with intervention techniques and methods to reduce criminal activity. Students will research crime trends and prevention strategies of local communities. Same as SOC 206; students may not receive credit for both. 5 lecture hours. Satisfies social science distribution area C requirement or may be used as a specified elective in the AA degree.

## **SPCH 101**

**5 Credits**

### **Fundamentals of Speech**

Principles of effective oral communication including delivery, organization, content, and stress management. A functional approach to effective speaking with practical application in informative, impromptu, and persuasive speeches. 5 lecture hours. Satisfies humanities distribution area F requirement or specified elective for the AA degree.



**GRAYS HARBOR COLLEGE - Typical Student Schedule**  
**CRIMINAL JUSTICE - ASSOCIATE IN APPLIED SCIENCE DEGREE**

**1<sup>st</sup> Quarter**

<b>Course #</b>	<b>Course Title</b>	<b>Credits</b>
CIS 102	Microcomputer Applications	3
CJ& 101	Introduction to Criminal Justice	5
CJUS 102	Law and Society	5
	ELECTIVES	5
<b>TOTAL QUARTER CREDITS</b>		<b>18</b>

**2<sup>nd</sup> Quarter**

<b>Course #</b>	<b>Course Title</b>	<b>Credits</b>
CJUS 104	The Line Officer Function: Police and Corrections	5
CJUS 151	Drugs and Our Society	5
ENGL& 101	English Composition I	5
<b>TOTAL QUARTER CREDITS</b>		<b>15</b>

**3<sup>rd</sup> Quarter**

<b>Course #</b>	<b>Course Title</b>	<b>Credits</b>
SOC 106	Juvenile Justice	5
CJUS 201	Art of Public and Private Investigation	5
MATH 101	Applications of Algebra (or higher)	5
<b>TOTAL QUARTER CREDITS</b>		<b>15</b>

**4<sup>th</sup> Quarter**

<b>Course #</b>	<b>Course Title</b>	<b>Credits</b>
PSYC& 100	General Psychology	5
SOC& 101	Introduction to Sociology	5
SPCH 101	Fundamentals of Speech	5
<b>TOTAL QUARTER CREDITS</b>		<b>15</b>

**5<sup>th</sup> Quarter**

<b>Course #</b>	<b>Course Title</b>	<b>Credits</b>
CJUS 110	Law and Justice	5
PSYC& 200	Lifespan Psychology	5
PSYCH 250	Social Psychology	5
<b>TOTAL QUARTER CREDITS</b>		<b>15</b>

**6<sup>th</sup> Quarter**

<b>Course #</b>	<b>Course Title</b>	<b>Credits</b>
SOC 112	Criminology	5
CJUS 258	Criminal Justice Internship	5
	ELECTIVES	5
<b>TOTAL QUARTER CREDITS</b>		<b>15</b>

**PLEASE NOTE:** Students may substitute HPE 151 for CJUS 151; PSYC& 220 for PSYCH 250; PSYCH 106 for PSYC& 200.

**GRAYS HARBOR COLLEGE - Typical Student Schedule**  
**CRIMINAL JUSTICE - CERTIFICATE OF COMPLETION**

**1<sup>st</sup> Quarter**

<b>Course #</b>	<b>Course Title</b>	<b>Credits</b>
CJ& 101	Introduction to Criminal Justice	5
CJUS 102	Law and Society	5
ENGL& 101	English Composition I	5
<b>TOTAL QUARTER CREDITS</b>		<b>15</b>

**2<sup>nd</sup> Quarter**

<b>Course #</b>	<b>Course Title</b>	<b>Credits</b>
CJUS 104	Line Officer Function: Police & Corrections	5
CJUS 151	Drugs and Our Society	5
PSYCH 106	Applied Psychology	3
SOC& 101	Introduction to Sociology	5
<b>TOTAL QUARTER CREDITS</b>		<b>18</b>

**3<sup>rd</sup> Quarter**

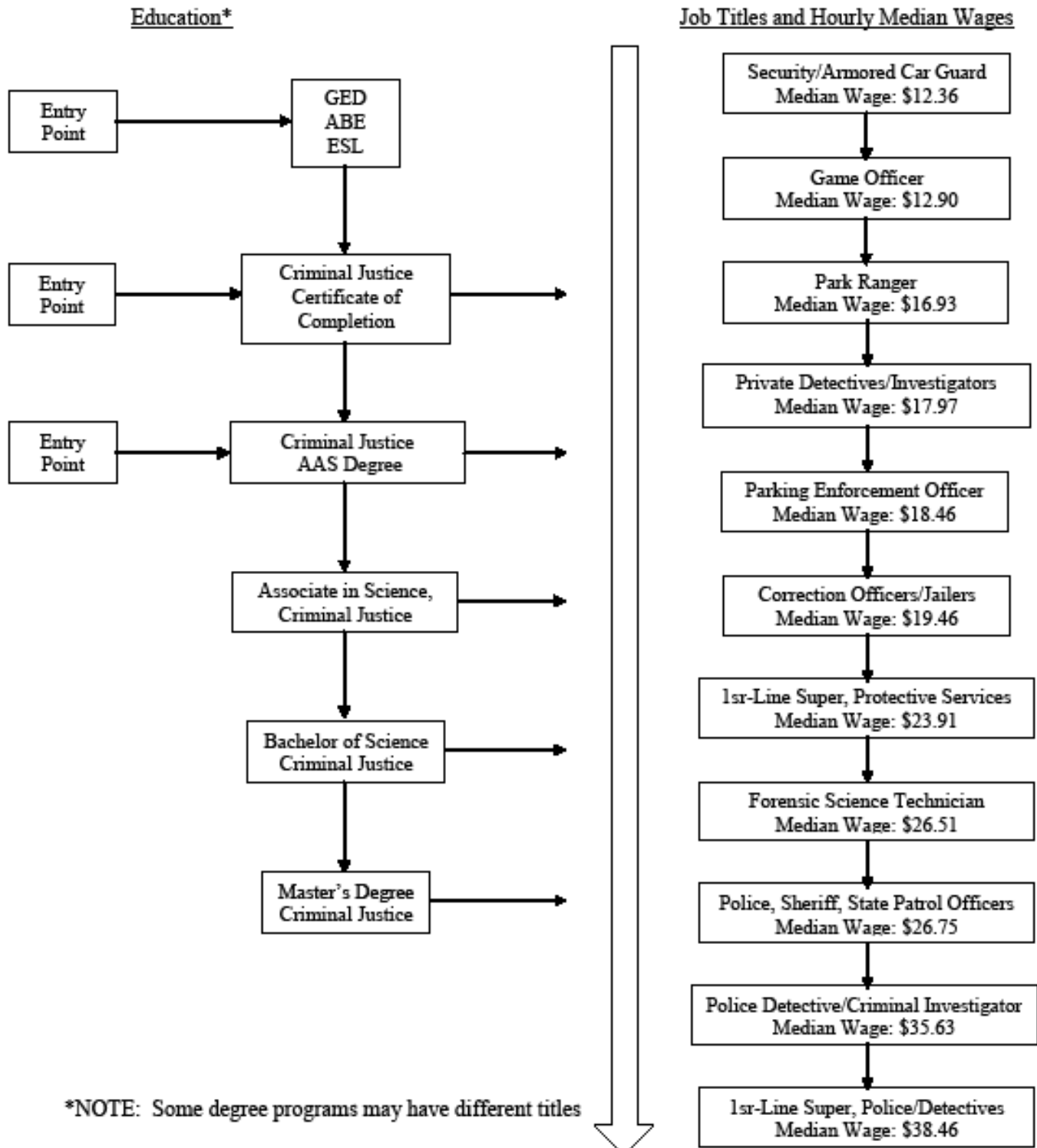
<b>Course #</b>	<b>Course Title</b>	<b>Credits</b>
SOC 106	Juvenile Justice	5
SOC 112	Criminology	5
SPCH 101	Fundamentals of Speech	5
<b>TOTAL QUARTER CREDITS</b>		<b>15</b>

**PLEASE NOTE:** Students may select four (4) courses from CJUS 102, CJUS 104, CJUS 106, CJUS 110, CJUS 201, CJUS 204, and CJ& 112. Students may substitute HPE 151 for CJUS 151; CIS 102 for SPCH 101; PSYC& 100 for PSYCH 106.



# GRAYS HARBOR COLLEGE

## CRIMINAL JUSTICE CAREER PATHWAY



*Grays Harbor College*  
**PROJECT SUCCESS Opportunity Grant**

***Apply for Your Opportunity Grant Now!***

In order to determine your eligibility for the *Project Success* Opportunity Grant, you must complete the attached application, attach all necessary documents and complete the personal statement essay.

Applications are to be returned to:

Grays Harbor College *Project Success* Opportunity Grant  
Room 171 "In the HUB"  
Grays Harbor College  
1620 Edward P. Smith Drive  
Aberdeen, Washington 98520.  
**Phone: 360.538.4155**  
**Fax: 360.538.4293**

If you need assistance with any part of this application please contact the phone number provided, or stop by the office for assistance in person.

**PLEASE NOTE:**

- 1. Fill out each section in full.**
- 2. Applications will be read in the order in which they are received.**
- 3. Incomplete applications will be returned to the student which could result in the delay of acceptance and/or funds.**

**Date**  
\_\_\_\_/\_\_\_\_/\_\_\_\_

**Application  
for  
OPPORTUNITY GRANT PROGRAM ELIGIBILITY**

**Section One: Personal Information**

\_\_\_\_\_  
Name (Last, First, Middle Initial)

\_\_\_\_\_  
Home Phone \_\_\_\_\_ Work Phone \_\_\_\_\_

\_\_\_\_\_  
Cell Phone \_\_\_\_\_ Message Phone \_\_\_\_\_

\_\_\_\_\_  
Mailing Address \_\_\_\_\_ City \_\_\_\_\_ State \_\_\_\_\_ Zip \_\_\_\_\_

\_\_\_\_\_  
E-mail Address

Social Security #: \_\_\_\_\_

Your **Social Security Number** is confidential and, under a federal law called the Family Educational Rights & Privacy Act, the college will protect it from unauthorized use and/or disclosure. In compliance with State/federal requirements, disclosure may be authorized for the purposes of state and federal financial aid, Hope/Lifetime Learning tax credits, academic transcripts, Assessment or accountability research.

GHC Student ID#: \_\_\_\_\_

Your **Student identification Number** is assigned by GHC and will be used to identify your records at this college.

\_\_\_\_\_/\_\_\_\_\_/\_\_\_\_\_ Age \_\_\_\_\_ \_\_\_ Male \_\_\_ Female

Date of Birth

Are you a U.S. citizen? \_\_\_ Yes \_\_\_ No Washington State resident? \_\_\_ Yes \_\_\_ No

What is the ethnic group with which you most identify?

*(To answer this question is optional)*

\_\_\_\_ American Indian/Alaskan Native

\_\_\_\_ Native Hawaiian, other Pacific Islander

\_\_\_\_ Tribal Affiliation \_\_\_\_\_

\_\_\_\_ Caucasian/White

\_\_\_\_ Black/African-American

\_\_\_\_ Asian

\_\_\_\_ Hispanic or Latino

\_\_\_\_ More than one race



Have you completed the FAFSA?  Yes  No

If no, when do you expect to apply? \_\_\_\_\_

Are you or have you received Federal Financial Aid for school  
such as a Pell Grant?  Yes  No for how much \$ \_\_\_\_\_

or State-Need Grant?  Yes  No for how much \$ \_\_\_\_\_

Do you receive other financial assistance from the state?  Yes  No

What type? \_\_\_\_\_

Have you applied for the WorkFirst Program?  Yes  No

If yes, what are they paying for? \_\_\_\_\_

What is your case managers name and phone number? \_\_\_\_\_

Have you applied for the Worker Retraining Program?  Yes  No

If yes, what are they paying for? \_\_\_\_\_

What is your case managers name and phone  
number? \_\_\_\_\_

Veterans and/or their dependants may qualify for educational benefits. Please check here if you are a  
veteran and/or a dependant of a veteran.  Yes  No

**2009 HHS POVERTY GUIDELINES**

<b>First</b> select your family size.	<b>Second</b> see if your Gross Annual Family Income is <u>no greater than</u> the amount of your family size—the amounts directly across from the family size you selected.	<b>Third</b> check here if your gross annual family income is no greater than the amount directly across from your family size. <b><u>If it is greater you are not eligible for this grant.</u></b>
1 _____	\$21,660	_____
2 _____	\$29,140	_____
3 _____	\$36,620	_____
4 _____	\$44,100	_____
5 _____	\$51,580	_____
6 _____	\$59,060	_____
7 _____	\$66,540	_____
8 _____	\$74,020	_____

**For each additional person, add \$7,480** SOURCE: Federal Register, Vol. 74, No. 14, January 23, 2009, p.4200



